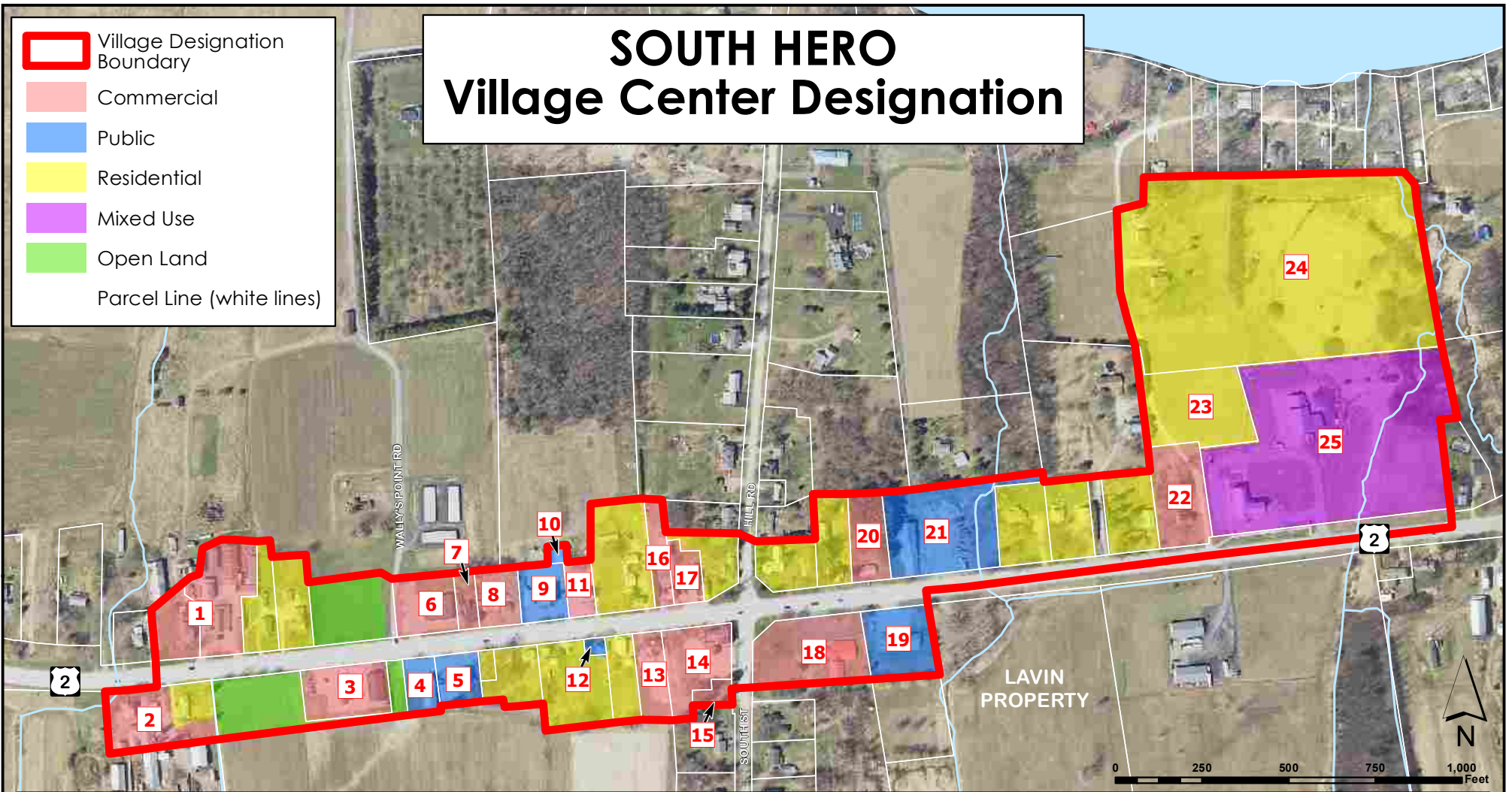


SOUTH HERO Village Center Designation

-  Village Designation Boundary
-  Commercial
-  Public
-  Residential
-  Mixed Use
-  Open Land
- Parcel Line (white lines)



- | | | | |
|--|--|--|--|
| 1 Robinson's Hardware & Lumber | 9 South Hero Volunteer Fire Co. Office/
Old White Meeting House-Granny's Attic | 16 Remedies Pharmacy & Juice Bar | 24 Planned Senior Housing |
| 2 Robinson Farm Stand | 10 South Hero Volunteer Fire Station | 17 Apple Island Real Estate | Wally's Place/
Wally's by Night/Cook Sisters,
Champlain Islands
Community Health Center,
South Hero Land Trust,
Worthen Library,
Two Hero's Restaurant |
| 3 Jolley's Convenience Store | 11 Blue Paddle Bistro | 18 Apple Farm Market/
Seb's Take-Out Ice Cream | |
| 4 South Hero Town Office | 12 South Hero
Bicentennial Museum | 19 U.S. Postal Service 05486 | 
Vermont Coordinate System
Transverse Mercator, NAD 83.
For planning purposes only.
Prepared by:
NRPC
75 Fairfield Street
St. Albans, VT 05478
802-524-5958
www.nrpcvt.com
April, 2020.
z:/gis/projects/county/grandisle/southhero/villagedesignation |
| 5 South Hero Rescue | 13 Kinney Insurance/
VT Woman Publishing/
Action Hair | 20 Clever Designs Antiques | |
| 6 South Hero Pharmacy | 14 Merchant's Bank | 21 Town Highway Department | |
| 7 Cedar Ledge Builders/Pan's Pizza | 15 David Carter Law Office/
South Hero Land Trust | 22 Future Daycare Center | |
| 8 Champlain Islands Developing
Essential Resources (CIDER) | | 23 Planned Senior Housing | |